

COMPLEMENTS



PAVIGYM
THE BASIS OF FITNESS

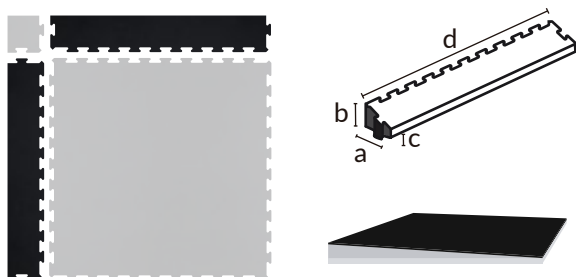


PAVIGYM
ACCESSORIES

Accessories & complements for each Pavigym tiles

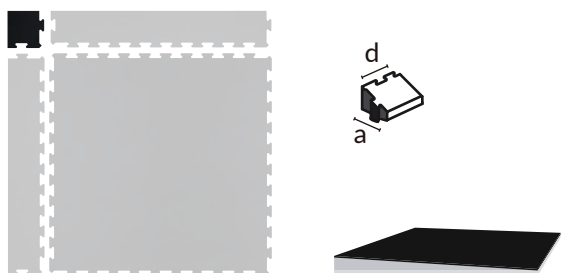
Edges & corners for each PAVIGYM tiles.

BEVELED EDGE TO SUBFLOOR



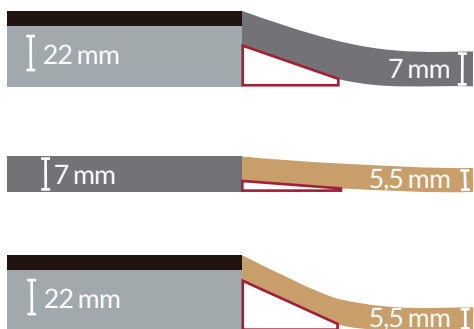
| | PAVIGYM MOTION | PAVIGYM BODYMIND | PAVIGYM PERFORMANCE | PAVIGYM ENDURANCE | PAVIGYM ENDURANCE S&S | PAVIGYM EXTREME | PAVIGYM EXTREME S&S | PAVIGYM TATAMI 20mm | PAVIGYM TATAMI 30mm |
|-------------|-------------------|---------------------|------------------------|----------------------|--------------------------|--------------------|------------------------|------------------------|------------------------|
| Weight (kg) | 0,7 | 0,55 | 0,5 | 0,6 | 1,2 | 0,6 | 1,2 | 0,6 | 0,9 |
| A (cm) | 12 | 23 | 10,5 | 10,5 | 22 | 10,5 | 22 | 30 | 30 |
| B (mm) | 9 | 11,5 | 5,5 | 7 | 22 | 7 | 22 | 20 | 30 |
| C (mm) | 3 | 3 | 3 | 3 | 5 | 3 | 5 | 5 | 5 |
| D (cm) | 90 | 120 | 90 | 90 | 90 | 90 | 90 | 100 | 100 |

BEVELED CORNER



| | | | | | | | | | |
|--------|----|----|------|------|----|------|----|----|----|
| A (cm) | 12 | 23 | 10,5 | 10,5 | 22 | 10,5 | 22 | 32 | 32 |
| D (cm) | | | | | | | | | |

INTERNAL TRANSITION

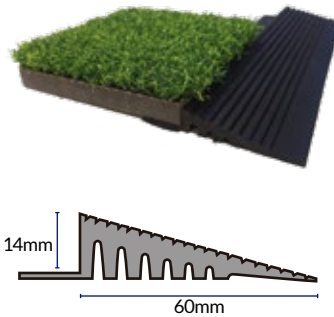


| | FROM 22mm TO 7mm | 7mm TO 5,5mm | 22mm TO 5,5mm |
|-------------|------------------|--------------|---------------|
| Weight (kg) | 0,6 | 0,1 | 0,7 |
| A (cm) | 22 | 4 | 22 |
| B (mm) | 15 | 1,5 | 16,5 |
| C (mm) | 3 | 1,5 | 3 |
| D (cm) | 90 | 90 | 90 |

Edging & baseboards for each PAVIGYM tiles.

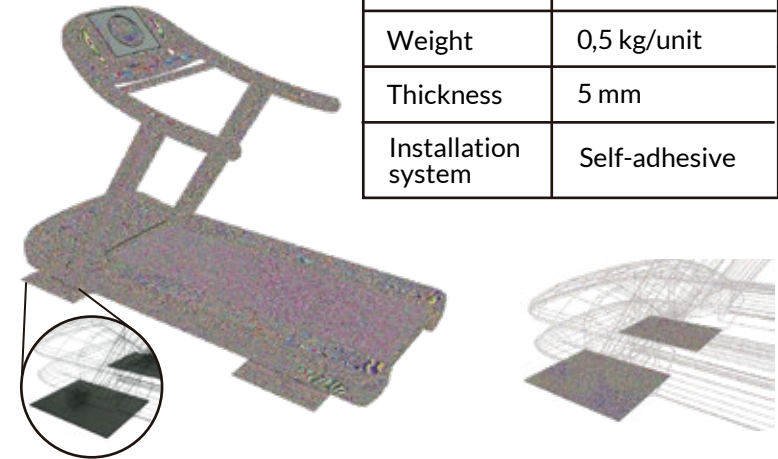
BOX EDGING PVC

| | |
|-------------|--|
| Name | Flexible PVC |
| Material | PVC |
| Width | 60mm |
| Height | 14mm |
| Length | 2.50m |
| Description | It is a ramped, surface mounted pvc matwell frame used to create a surface matwell where a mat is laid directly on top of a floor. |
| Application | Suitable for heavy pedestrian traffic use, with the exception of environments subject to heavy trolley traffic. |



TREADMILL PROTECTION PLATE

| | |
|---------------------|-----------------|
| 1 box | 2 units |
| Size | 30 x 40 cm/unit |
| Material | Performance |
| Weight | 0,5 kg/unit |
| Thickness | 5 mm |
| Installation system | Self-adhesive |



BASEBOARDS

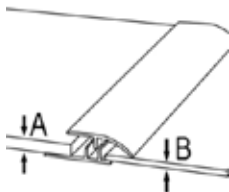
| Name | Wood Baseboard | Bending profile | Bending transition | Bending Machine |
|-------------|----------------|-----------------|--------------------|-----------------|
| Size (cm) | 183 x 8 x 1,6 | 275 x 9 x 0,3 | 0,7 | 45 x 45 x 25 |
| Material | Wood | Aluminum | Aluminum | Aluminum |
| Weight (kg) | 8,7 | 0,37 | 0,3 | 6 |



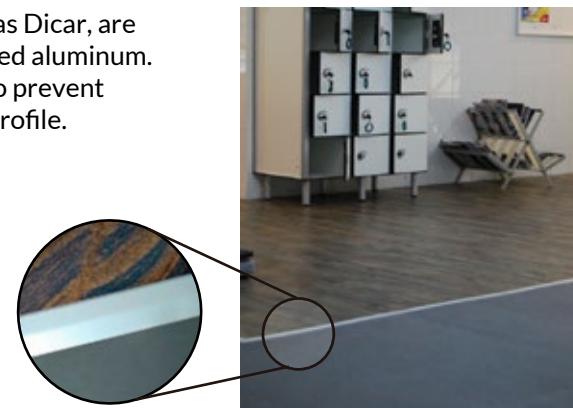
Joiners & transitions for each PAVIGYM tiles.

ALUMINIUM JOINERS

| | |
|-----------------|----------------------|
| 1 Box | 10 units (20 m) |
| Material | Anodized aluminum |
| Length | 2 m |
| Colours | Silver / Black |
| Alloy | 6063 (UNE 38-308-89) |
| Fire resistance | MO (UNE 23-727-90) |



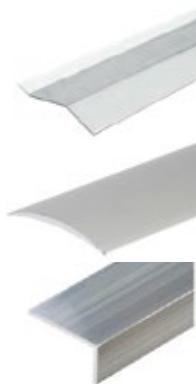
The aluminum profiles of Pletinas Dicar, are profiles made entirely of extruded aluminum. Anodized in matte silver color to prevent corrosion and oxidation of the profile.



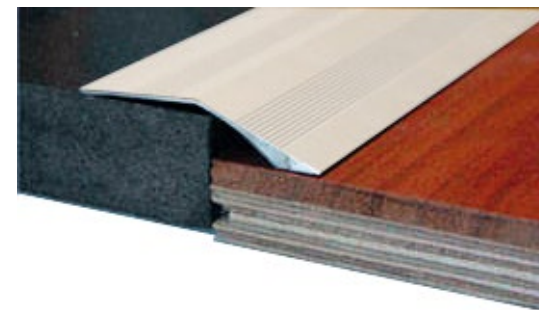
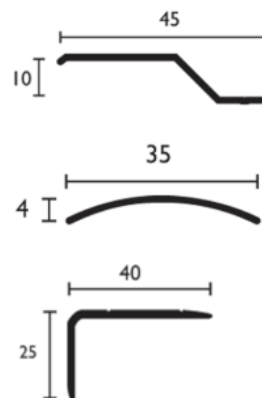
ALUMINIUM DOOR TRANSITIONS



| | |
|--|-----------------|
| Type I (max. 12 mm min. 9mm) | 5 units (10 ml) |
| | 2 units (4 ml) |
| Type II (same level) | 5 units (10 ml) |
| | 2 units (4 ml) |
| Type III (corner profile box= 12 ml) | 6 units (12 ml) |
| | 2 units (4 ml) |



| | |
|----------|-----------------------|
| 1 Box | 5 units |
| Material | Aluminum |
| Colours | Silver / Wood / Black |



Adhesive for products which need to be glued.

EXTRA STRONG - COLLAK WA-1040

Extra strong adhesive for wet, pressure-sensitive and contact bonding of PVC, CV, polyolefin and rubber flooring.



Composition

- Mixture of acrylate copolymer dispersion, modified natural resin and inorganic fillers.

Main Characteristics

- Extra strong tack.
- Suitable for wet, pressure-sensitive and contact bonding.
- Excellent wetting even with difficult coverings.
- Very economical coverage.

Application

- Polyolefin sheeting.
- Rubber sheets and tiles up to 2.5 mm thickness with a smooth, sanded back.
- Textile flooring with a latex, PVC or PUR foam backing.
- PVC flooring, homogeneous and heterogeneous, sheets and tiles.
- CV flooring.
- Quartz vinyl floor tiles.

* Wait 48 hours before using the installation.



POLYURETHANE ADHESIVE - KEFRÈN PU-815

Bi-component polyurethane adhesive appropriate if risk of humidity or sun radiation exist. Do not use if humidity is present when installing. Fire resistant M1.



Composition

- Bi-component polyurethane adhesive.

Consistency

- Increased fluidity.

Time of use after mixing

- Maximum 1 hour.

Application

- Keep the surfaces clean and dry during fixing.
- Mix the resin with the hardener and apply with a roller.
- Wait 10 minutes before beginning the placement.
- Install the flooring and press against the ground.

* Wait 48 hours before using the installation.



FLOOR CLEANER

JONTEC BEST



Cleaners for PAVIGYM tiles.

pH neutral and Low foam neutral floor degreaser. High emulsifying power for mineral oil and grease removal.

- Main Characteristics
- Powerful formula removes grease and grime from all floor types.
 - Safe for use on polished floors.
 - Manual and machine application.
 - Aplicación manual o mecánica.

FLOOR CLEANER

JONTEC TENSOL



Neutral pH floor maintainer.

- Main Characteristics
- Floor cleaner maintainer to remove dirt and improve gloss with buffing.
 - Low residue formula so no build up of waxes or polymers.
 - Use on all floor types and manual or machine application.

FLOOR CLEANER

JONTEC FORWARD



Heavy duty floor cleaner .

- Main Characteristics
- For use on unprotected floors to remove ingrained dirt and grease.
 - Suitable for all floor types.
 - Manual or machine application.

FLOOR CLEANER

JONTEC DESTAT



Antistatic cleaner for the maintenance of conductive floors.

- Main Characteristics
- Suitable for use on most hard floors resistant to water and treated soil.
 - It cleans well without shining off the surface.
 - Reduces electric shocks created by static charges.
 - Manual and machine application