



Recovery That Runs Itself

**WellnessSpace**<sup>®</sup>  
BRANDS



# A Legacy of Performance

Built for real world use. Proven at a global scale.  
WellnessSpace Brands delivers self-guided wellness solutions trusted in high-traffic commercial environments worldwide.

## 400M+ Sessions

Completed Since 1989

## 37+ Years

Trusted by Operators

## 50+ Countries

Installed Worldwide

# Built for Scale

### Self-Guided by Design

Every product is built for fully clothed, intuitive use - delivering premium experiences without staff, training, or daily oversight.

### Engineered, Tested & Proven

Validated through automated 24-hour testing, rigorous inspections, and life-cycle durability testing equivalent to 20+ years of real-world use.

### Built for High-Traffic Use

Commercial-grade construction engineered to perform consistently at scale, day after day.

### A Complete Wellness Portfolio

Massage, heat, cold, contrast, and mental wellness - designed as a connected system for modern recovery and wellness.

*"From day one, our goal was simple: make recovery easier and more accessible for everyone."*



*Paul Lunter*

Paul Lunter  
Founder & CEO of WellnessSpace Brands

## Decades of Innovation

From our first HydroMassage to today's latest generation, each iteration reflects decades of real-world feedback and ongoing engineering refinement.



# A Complete Recovery and Wellness Ecosystem

**HYDROMASSAGE.**

**CryoLounge+**

**RelaxSpace**

**RedZone**  
Sauna

**PolarWave**  
Dry Plunge



Heated Water  
Massage



Focused Cold  
& Heat



Relaxation Pod for  
Mind & Body



Red Light &  
Infrared Sauna



Cold Plunge Experience  
Without Getting Wet

## Our Latest Innovations

RedZone Sauna and PolarWave Dry Plunge expand our wellness offering with immersive heat, red light, and invigorating cold. Fully self-guided and built for high-traffic environments.

Designed as a flexible ecosystem, our portfolio integrates heat, cold, massage, light, and relaxation into one connected system. Modular, plug-and-play solutions adapt to your space and scale with your growth across fitness, hospitality, campus, and workplace environments.



# Heated Water Massage

Personalized, full-body heated massage for wellness and muscle recovery. Powerful waves of warm water target specific areas for a deeply relaxing experience.



### Full Body Heated Massage

Relieve soreness and tension with a fully clothed, full-body heated water massage.



### On-Demand Relaxation

Enjoy a deeply relaxing session in 15 minutes or less. No staff required.



### Easy to Use

A simple touchscreen makes every session intuitive from start to finish.

## Key Features



### Pressure Control

Adjust from light, gentle relief to deep, targeted massage



### Speed Settings

Slow to invigorating waves



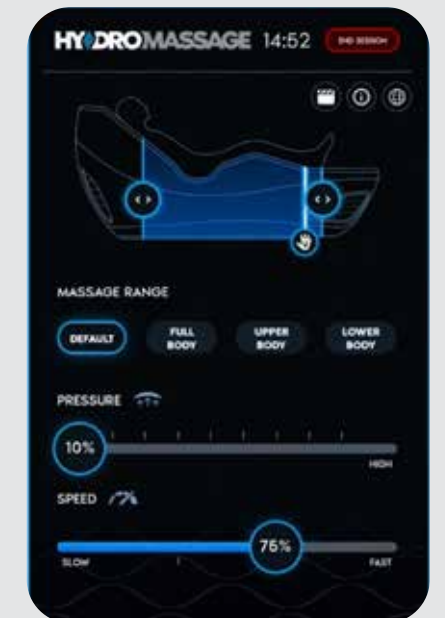
### Target Areas

Massage where you need it most, from calves to neck



### Ergonomic, Accessible Design

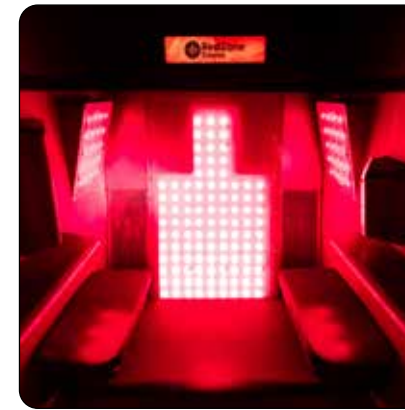
Easy-access seating with ergonomic comfort throughout





# Red Light & Infrared Sauna

Delivers a comfortable, full-body wellness experience in one efficient session. RedZone Sauna helps provide temporary relief from everyday aches and stiffness while supporting relaxation and overall well-being.



### Heat + Light Together

Infrared warmth and red light combined to deliver two trusted wellness modalities in one efficient, full-body session.



### Modern Standalone Design

Its compact, all-in-one footprint delivers a premium wellness experience without requiring dedicated buildouts or complex installation.



### Built For Frequent Daily Use

Purpose-built for high-traffic environments, RedZone Sauna runs reliably day after day with minimal operational oversight.

## Key Features



### Commercial-Grade Interior

Durable, moisture-resistant surfaces wipe clean quickly and stand up to daily use



### Built-in Safety Controls

Smart alerts and timer compatibility help sessions run smoothly and reliably



### Full Coverage Red Light

Targeted wavelengths for full-body exposure



### Dual Infrared Heat

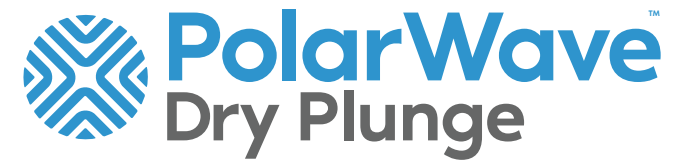
Far- and near-infrared warmth combined for a consistent, full-body heat experience



### Enhanced Heat Flow

Forced-air circulation helps deliver a noticeably warmer, evenly distributed heat experience throughout each session





# Cold Plunge Experience Without Getting Wet

Cold plunge benefits – without the water. PolarWave delivers the invigorating effects of cold immersion in a clean, dry, fully self-guided environment, helping members feel refreshed and recharged while eliminating the mess and maintenance of traditional ice baths.



### Dry Cold Experience

Enjoy the effects of a cold plunge without water, towels, or cleanup.



### No Maintenance Hassle

No plumbing, draining, or daily upkeep - simply plug in and go.



### Fast, On-Demand Sessions

PolarWave offers the invigorating, quick sessions make it easy to cool down and reset between workouts or during busy schedules.

## Key Features



### Immersive Cold

Head to toe cooling without water or mess



### Compact Footprint

Standalone design fits easily into recovery rooms or smaller spaces



### Optional Compression

Boost the impact of cold in the legs by adding additional pressure



### Self-Guided Operation

Simple controls make every session easy - no staff required



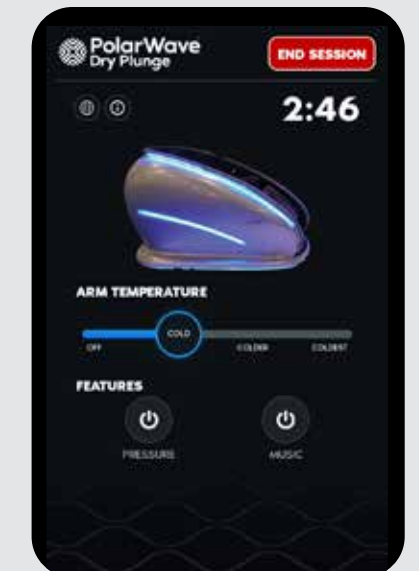
### Quick Sessions

3-7 minute sessions fit easily between workouts or busy schedules



### Adjustable Cooling

Choose from multiple cooling levels to match comfort and preference





## Focused Cold and Heat

A contrast-based cold and heat experience designed to ease muscle soreness and minor aches. CryoLounge+ delivers targeted cooling and warmth in a comfortable, fully self-guided lounge - making it easy for members to relax, reset, and feel refreshed after workouts.



### Targeted Cold Total Comfort

Apply cold exactly where you need it while gentle heat in surrounding areas keeps the session comfortable and relaxing.



### Cold + Heat in One

Switch between cold and heat in a single session to help ease post-workout soreness and leave you feeling refreshed.



### Clean, Hassle-Free Sessions

Stay fully clothed in a dry, lounge-style design - no prep, cleanup, or staff required.

## Key Features



### Six Targeted Zones

Independently controlled zones deliver cold or heat exactly where you need it



### Leg Compression

Built-in compression enhances comfort and helps ease post-workout soreness



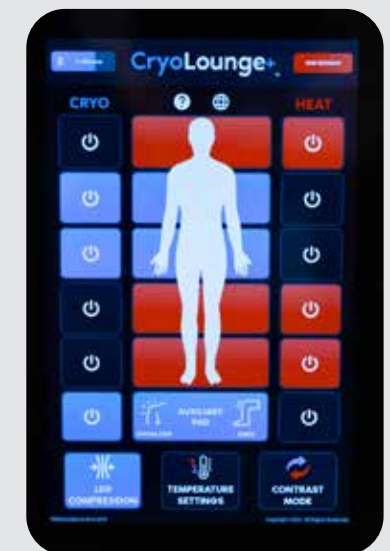
### Auxiliary Zone

Auxiliary Pad included for hard-to-reach areas such as shoulders and knees



### Contrast Mode

Easily alternate between hot and cold in different zones for a more effective experience



### Self-Guided Operation

Intuitive touchscreen controls make every sessions simple and user-friendly



# Relaxation Pod for Mind & Body

A private, immersive space designed to help users relax, reset, and refocus. RelaxSpace combines guided breathing, calming visuals, optional scent, and heated seating into a self-guided experience that supports overall well-being.



### Immersive Visual Experience

A high-resolution display fills the user's field of vision with calming visuals that help quiet the mind.



### Guided, Multi-Sensory Sessions

Breathing exercises, meditation content, scent infusion, and heated seating work together to create a structured reset.



### Modern Design

A sleek, eye-catching pod that fits easily into wellness spaces with no complex buildout required.



## Key Features



### Heart-Rate Monitoring

Real-time feedback helps users stay mindful and track their relaxation throughout each session



### Guided Breathing & Meditation

Short, structured sessions help users relax and refocus



### Heated Lounge Seating

Gentle warmth enhances comfort and helps soothe tired, sore muscles throughout each session



### Vast Content Library

An extensive library of wellness, mindfulness, and educational content keeps each session fresh and engaging



### Self-Guided Operation

Intuitive touchscreen controls make every session easy - no staff required



### Scent Infusion

Carefully selected scents enhance the environment, helping users relax more fully and return to their day feeling refreshed



# Wellness Spaces for Your Business

Transform underutilized space into premium wellness experiences that drive engagement, revenue, and retention.



## Drive Engagement

Give members more reasons to stay longer and come back often with modern, in-demand wellness experiences.

## Grow Revenue

Add premium wellness services that create new monetization opportunities.

## Simplify Operations

Self-guided solutions deliver high impact with minimal staffing.



# Chosen by Top Operators Worldwide

Thousands of locations rely on WellnessSpace Brands solutions to deliver premium wellness experiences.



# What Our Customers Say

*"From an integration standpoint, WellnessSpace was plug and play. It layered seamlessly into our existing wellness ecosystem without disrupting operations, while elevating the overall member journey."*

**Annie Ostolasa**  
VP of Operations at Villa Sports Fitness

*"The CryoLounge is a game changer. It's plug & play with no staffing needed."*

**Michael Marquez**  
Operations Director of YMCA

*Game changing! This partnership has improved the student experience at IU Campus Recreational Sports and added to our toolkit to help improve the health and wellbeing of the IU Bloomington community. We saw over 12,000+ sessions the first semester!"*

**Josh Downing**  
Associate Director for Programming at Indiana University Bloomington

*"We like data. We want to know what members use, how long they use it for, how often they use it... That really set you guys apart from the competition. The technology that WellnessSpace has with their equipment... it was top tier."*

**Brian Tietz**  
President of Snap Fitness

*[HydroMassage] is our most invigorating and relaxing massage we have at ARC, and athletes are over the moon."*

**Megan Cato**  
Wellness Coordinator at Clemson University

*"I have built or been involved in remodels or designs of thousands of gyms, and I would not build a club today without including HydroMassage."*

**Mike Feeney**  
EVP at New Evolution Ventures

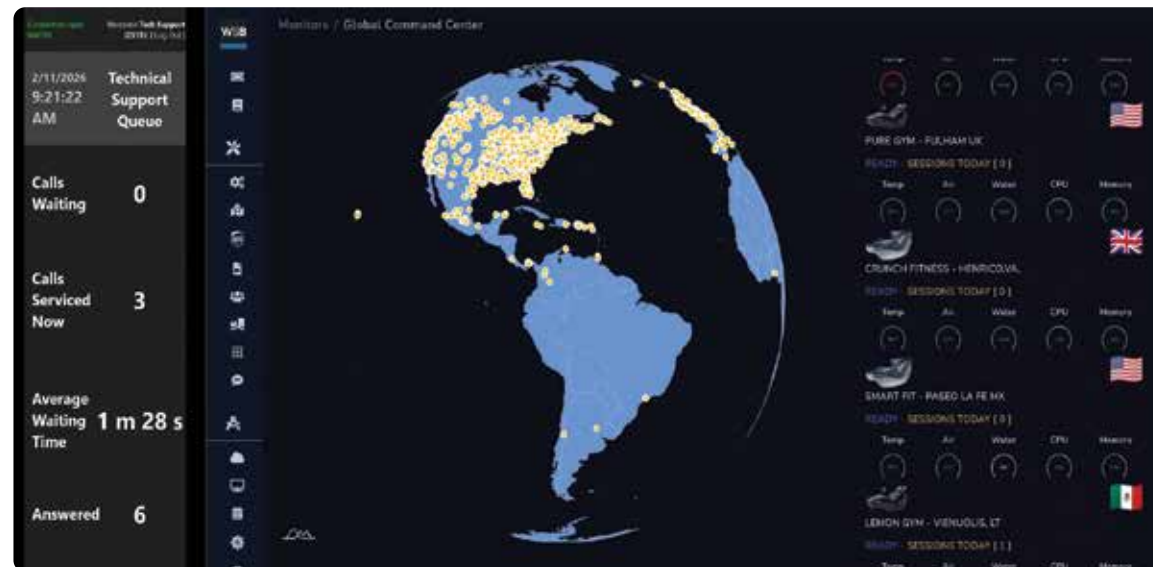
# Technology & Support Built Around Your Business

Every WellnessSpace Brands product comes backed by an industry-leading technology ecosystem and a dedicated support team available seven days a week - from first installation onward.

## Your Equipment. Connected and Monitored

Live support, proactive monitoring, and intelligent automation help keep your equipment running smoothly, with built-in tools that keep your team informed and in control.

- Technical Support Available 7-Days Per Week
- Network of 300+ Certified Technicians
- Online Diagnostics & Troubleshooting
- Real-Time Sensors & Proactive Alerts
- Customer Quick Support & Video App
- Preventative Maintenance Program
- Remote Installations & Repairs
- Self Service Knowledge Base



## CONTROL 2.0 Smart Management Software

CONTROL 2.0 is our proprietary software platform - a single dashboard that puts complete control of your wellness equipment at your fingertips. Manage sessions and scheduling. Broadcast on-screen promotions and custom messaging directly to units. Pull usage analytics to understand engagement and optimize your offering. For multi-location operators, cloud connectivity lets you manage every site from one centralized view.

# Technical Specifications and Warranty

## HydroMassage G3 Lounge

**Dimensions:** 91" L (231 cm) x 32" W (81 cm) x 43" H (117 cm)

**Weight:** 285 lbs (130 kg) without water, 385 lbs (175 kg) with 14 gal (53 L) of distilled water

**Tested and Approved:** UL/CSA/CE/CB/NOM safety standards

**Electrical Requirements:** Dedicated 208-240V/60 Hz, 30 Amps or 230V/50 Hz, 30 Amps

## CryoLounge+ Chair

**Dimensions:** 80"L (203 cm) x 33"W (84 cm) x 44"H (112 cm)

**Weight:** 290 lbs (131 kg)

**Cover:** Waterproof/fluid proof

**Tested and Approved:** UL/CSA/CE/CB/NOM safety standards

**Electrical Requirements:** Dedicated 110V/60 Hz, 220V/60 Hz, or 230V/50 Hz, 6-12 Amps

## RelaxSpace Wellness Pod

**Dimensions:** 92" L (234 cm) x 34" W (87 cm) x 69" H (175 cm), plus 6" (16 cm) on side for unit touchscreen

**Weight:** 310 lbs (141 kg)

**Tested and Approved:** UL/CSA/CE/CB/NOM safety standards

**Electrical Requirements:** 110/60 Hz, 15 Amps or 230V/50-60 Hz, 15 Amps

## PolarWave Dry Plunge

**Dimensions:** 82" L (208 cm) x 43" W (109 cm) x 53" H (135 cm)

**Weight:** 350 lbs (159 kg)

**Tested and Approved:** UL/CSA/CE safety standards

**Electrical Requirements:** 60Hz: 208-240V / 20A or 50Hz: 230V / 16A

**Water Requirements:** 8 gallons (30 liters) distilled water; combined with 5 gallons PolarWave Coolant (included), for 13 gallons total fluid

**Temperature:** 25-35° F (-4-2° C); similar to a cold plunge

## RedZone Sauna

**Dimensions:** 45" L (114 cm) x 62" W (157 cm) x 84" H (213 cm)

**Weight:** 775 lbs (351 kg)

**Tested and Approved:** UL/CSA/CE safety standards

**Electrical Requirements:** 60 Hz: 208-240V / 50 Hz: 230V (3 phase options available)

## Warranty

- 3-year warranty for the product structure
- 2-year warranty on non-maintenance components
- 90 days of labor coverage

International warranties may vary

